

Collaboration With Outside Agencies:

MES works with the Fulton County Center for Families who operate the before and after school childcare as well as a preschool program and summer child care. Early Head Start has a lending library within our building and offers services to parents as well as students who are parents. Parents as teachers and Even Start has been active in the community and MES supports these programs as well.



Reading is fundamental!

Other Services:

Accelerated Reader is offered in all classrooms for students to read books and take an assessment. A report is then generated giving the grade level and scores for the tests taken. A majority of our students take advantage of this program. We use Success Maker Math and Reading in grades kindergarten through five. This is a computer generated program to use a remediation as well as acceleration for both reading and math.



*One, Two, Three,
Four - Let's
count some more.*

Extracurricular Activities:

MES offers many extracurricular activities for our students. We have a strong intramural program offering volleyball and basketball. The elementary has also produced several elementary musical productions, including “Pirates of Penzance”, and “The Secret Garden”. We also offer band and chorus to students in grade five. Because of the Federal Programs we have been able to sponsor open library and computer nights as well as family reading and activity nights.

Dr. Julia M. Cigola,
District Superintendent

Mrs. Alicia M. Mellott,
Elementary Principal

Mrs. Lisa A. Culler,
Elementary Guidance Counselor

McConnellsburg Elementary Profile



Central Fulton School District
151 East Cherry Street
McConnellsburg, PA 17233

Phone: 717-485-4438

Fax: 717-485-9002

CEEB/ACT Code: 392460

Home of the McConnellsburg Spartans.

The School:

The elementary school houses grade levels expanding from a 4-year old kindergarten through 5th grade. We have an enrollment of 550 students. There are four classrooms at each grade level with class size averaging 21 students per teacher. MES offers special classes of art, music, health and physical education, and library. The primary classrooms are based on developmentally appropriate practices. Grade 5 is departmentalized for the subjects of science, math, social studies and language.



Grading:

The students in grades three to five receive report cards every nine weeks. Primary progress reports are on six week intervals. The evaluation of student achievement is based on the following system:

A = 92-100% B = 84-91%
C = 76-83% D = 68-75%
E = Below 68%

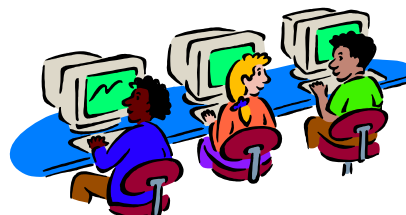
Students are recognized each marking period for receiving all A's or all A/B's. At the end of the school year all students who have achieved either honor roll for the year earn a chance to have their name drawn for a \$50 U.S. Savings Bond.

Achievement Testing/Other:

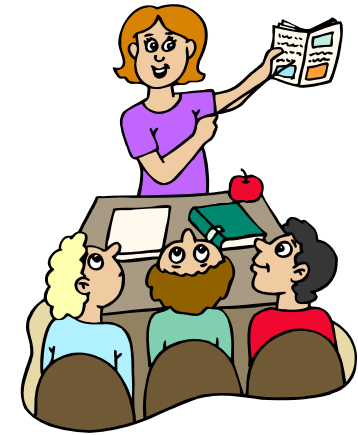
MES conducts both performance based assessments and assessments purchased with published curriculum. The Terra Nova Multiple Assessments is given at grade two. This assessment is parallel to the Pennsylvania State Assessment. At grades three, four and five the PSSA is given in reading and mathematics. At grade four the PSSA is also given in science and in Writing at grade five. The intent of the elementary is to expose students to testing formats that are similar to the PSSA so there is a comfort level when taking that particular assessment. All test results are sent home to parents/guardians when scores are received at the school.

Distance Learning Opportunities:

The elementary school accesses and uses interactive video. Our students have visited the State Museum, other areas of interest and have participated in contests across the state and nation. Our students have also used interactive video to communicate with same grade level classes in other districts to share books, poems, and other writing activities.



Computers are fun and full of information.



Support Services:

Areas of support to students at MES include **Title I** reading and math. We have in class and pull out assistance with full time reading specialists and an instructional tutor. Through the use of grant money, we have been able to implement an **after school homework program** using high school students as mentors for elementary students. Our **elementary counselor** offers guidance classes to all grade levels on topics chosen by the teachers, according to student needs. Another support system available to students in all grades is the **TOUCH Team**, student assistance. **Learning Support** classes are offered at all grade levels for qualifying students. We also house one Life Skills class and one Emotional Support class in this building.